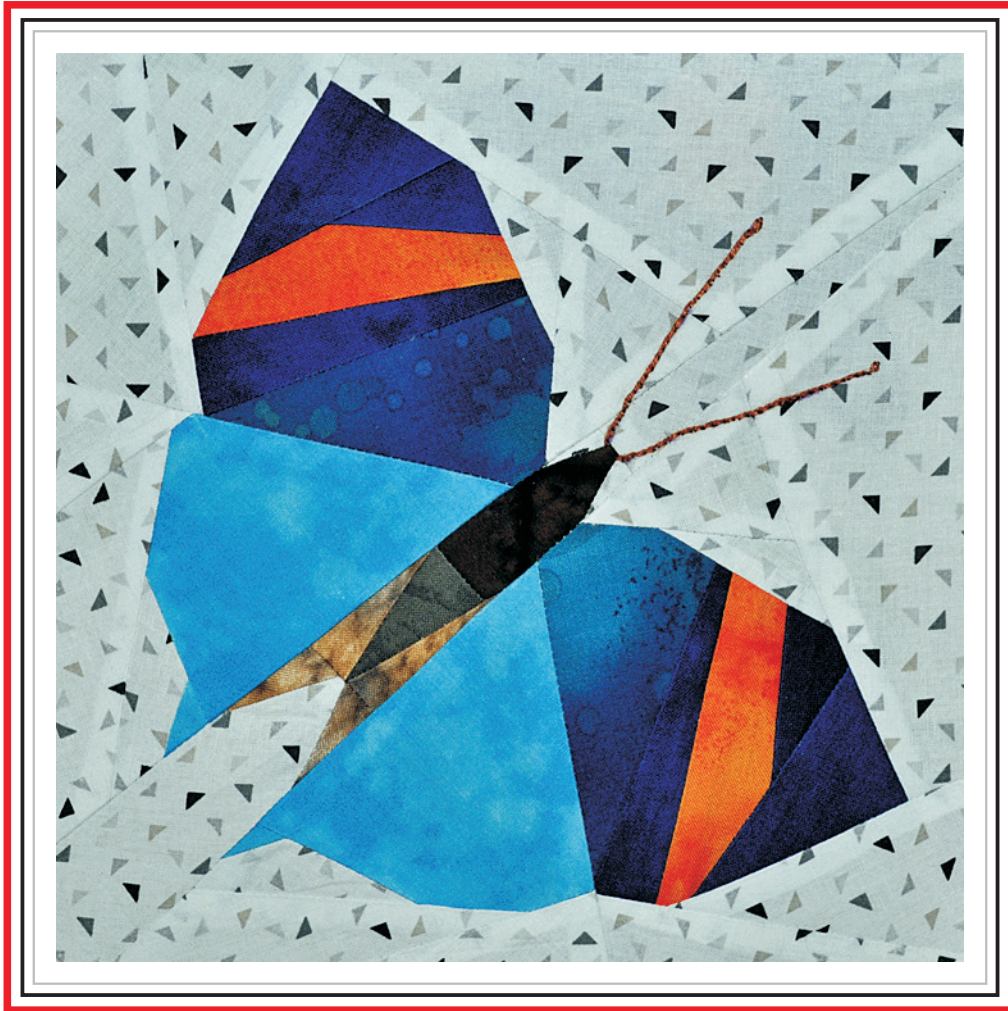


# Indian Leaf

*Kallima inachus*



Blocksize: 8 x 8 inch



© Claudia Hasenbach 2016  
Nußbaumerstraße 292  
D - 50825 Köln

[www.claudias-quilts.com](http://www.claudias-quilts.com)  
email: [pattern@claudias-quilts.com](mailto:pattern@claudias-quilts.com)

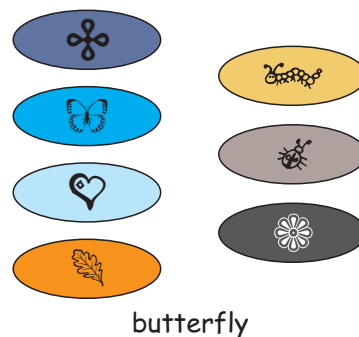
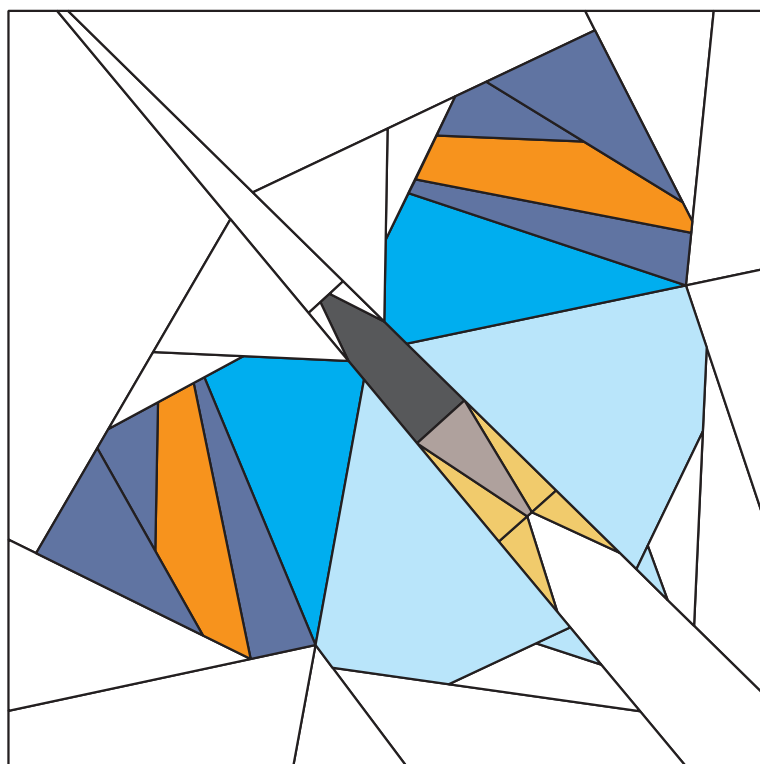
Artwork by [www.graphicgarden.com](http://www.graphicgarden.com)

Yardage requirements:

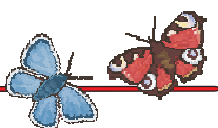
- about one fat eight fabric for the background
- orange, ocher yellow, light blue, blue and strong blue for the wings
- black and grey for the body

Furthermore:

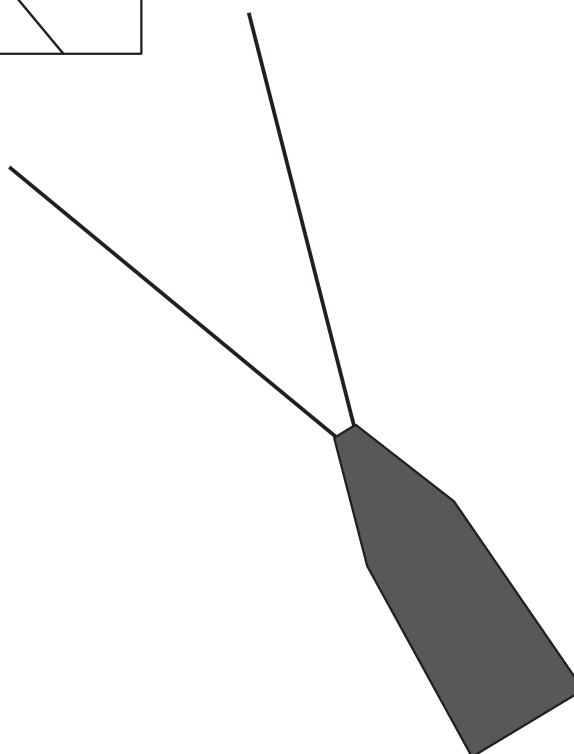
- embroidery thread for the antennae

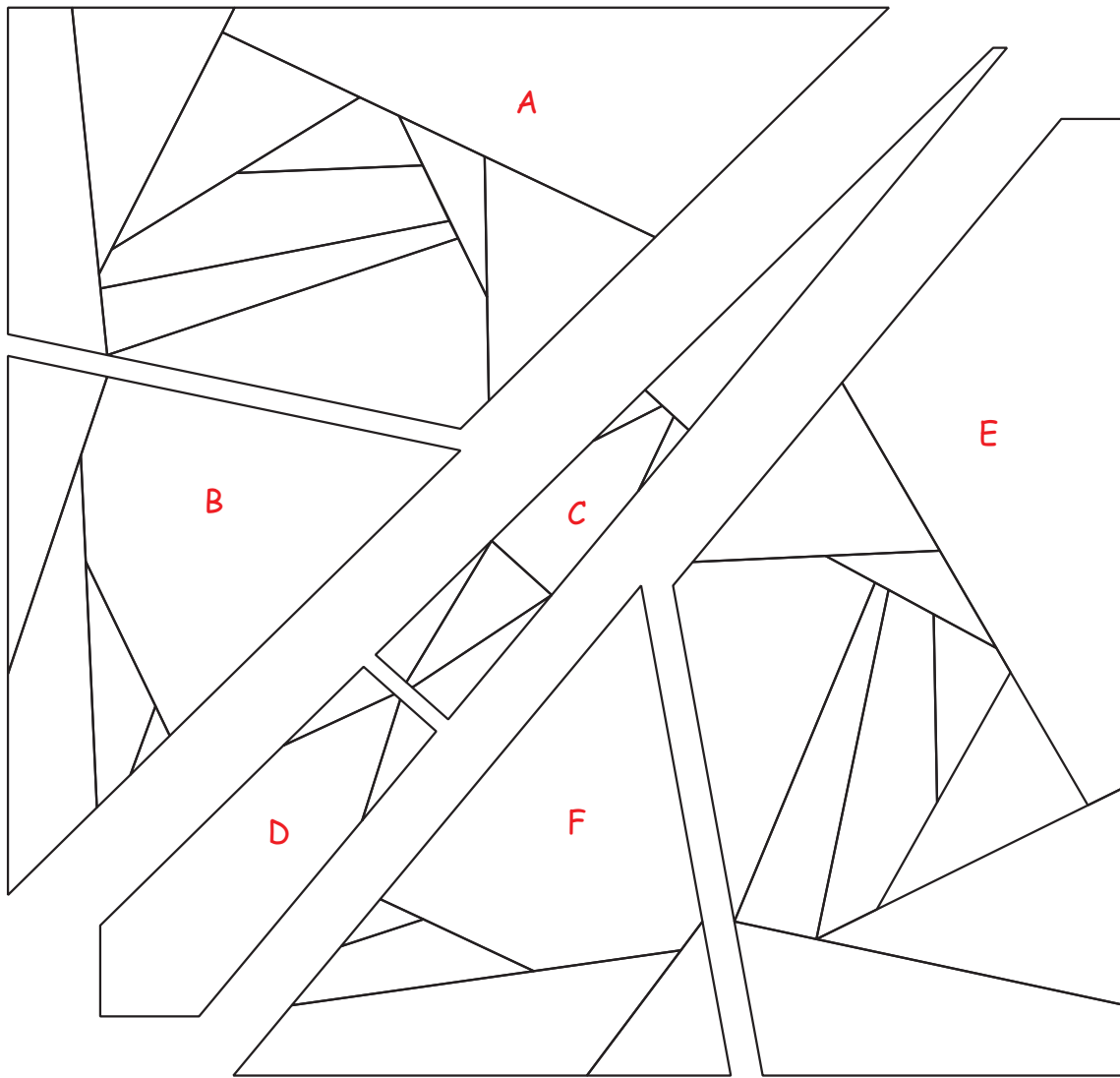


Embroidery:



Work the butterfly's antennae in stem stitch. Embroider a small lazy daizy stitch at the end of each antenna or attach a small bead if you like.





Sewing order:

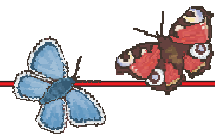
1. A + B

2. C + D

3. E + F

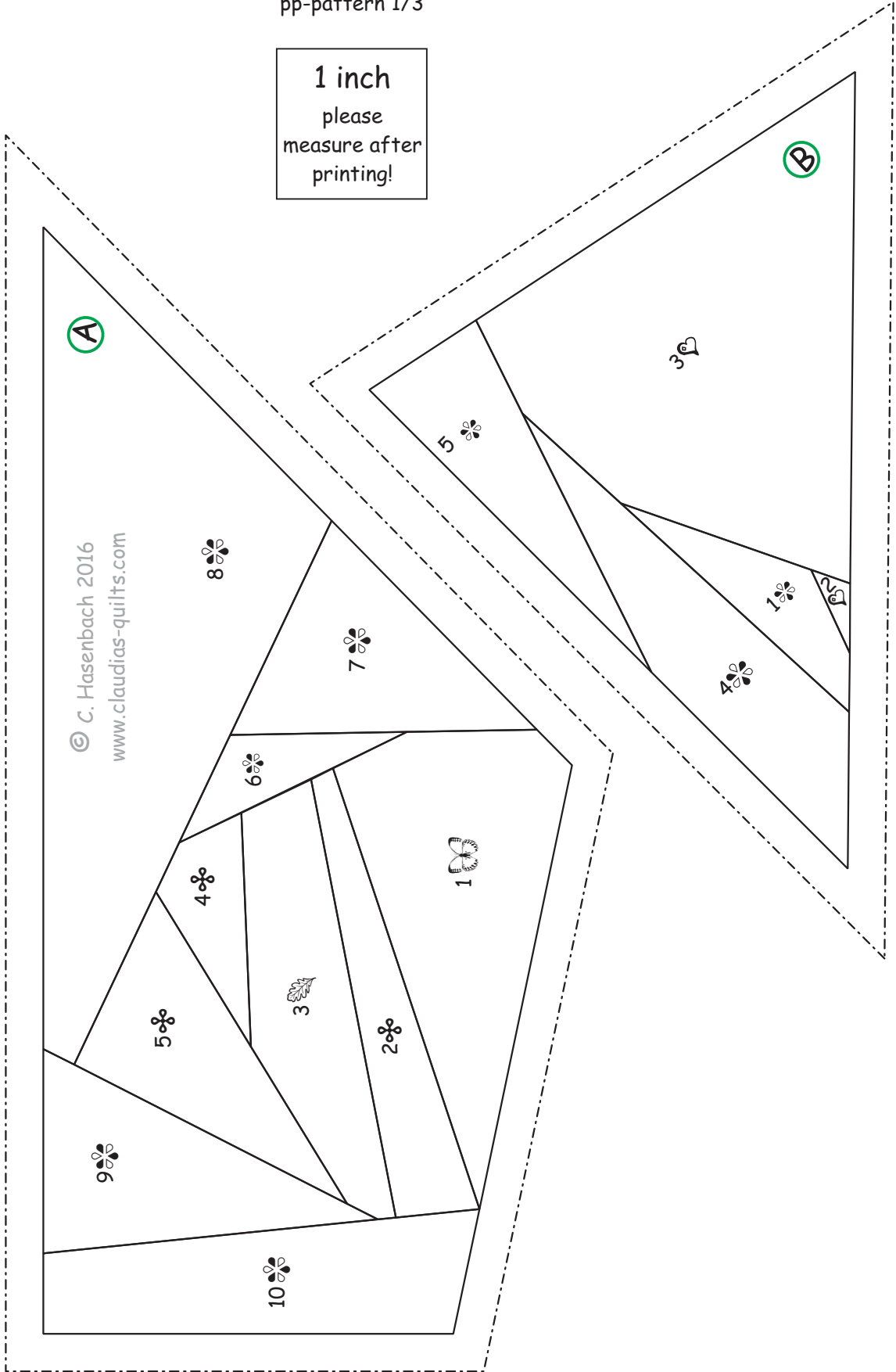
6. AB + CD

7. ABCD + EF

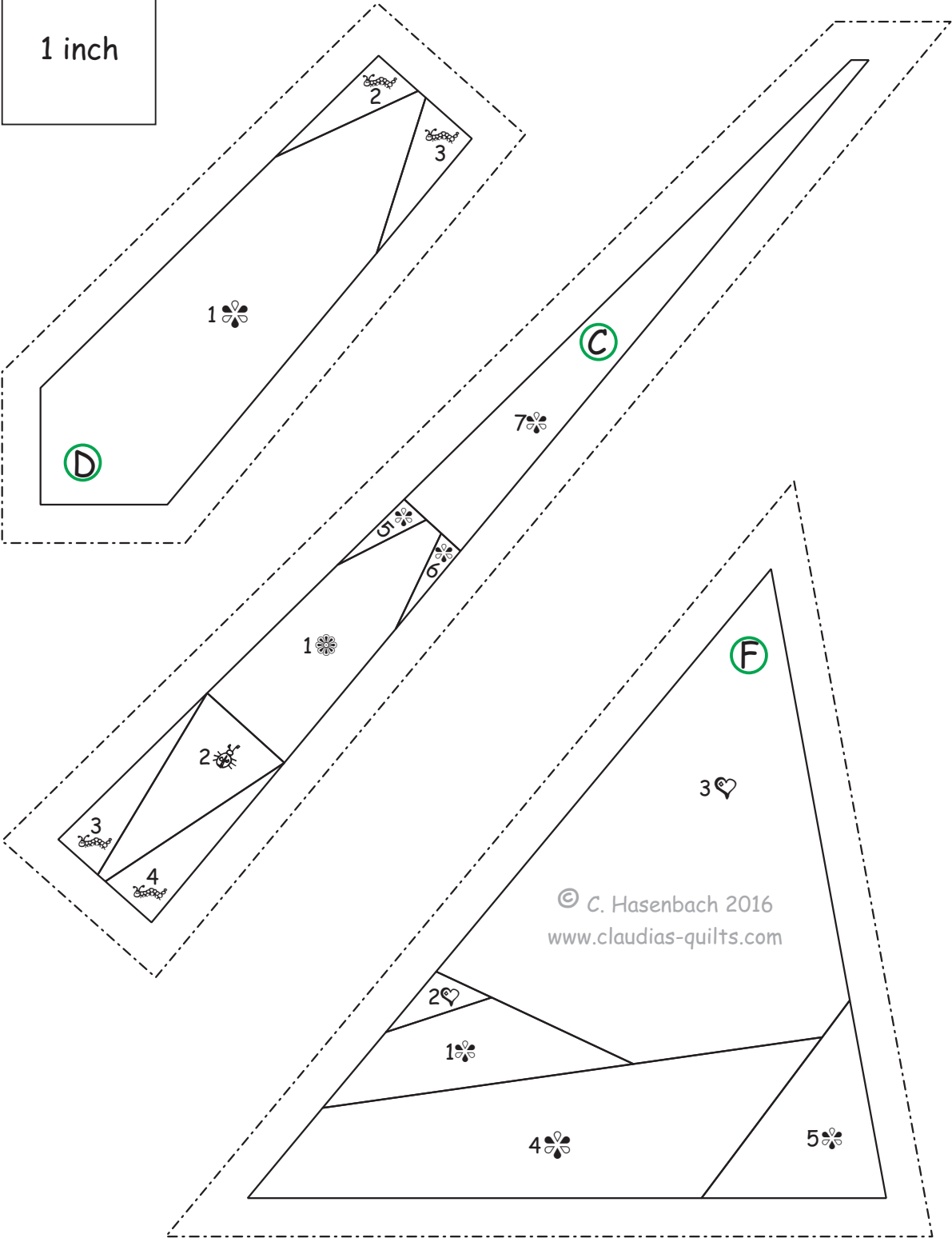


Indian Leaf  
pp-pattern 1/3

1 inch  
please  
measure after  
printing!



Indian Leaf  
pp-pattern 2/3



© C. Hasenbach 2016  
www.claudias-quilts.com

Indian Leaf  
pp-pattern 3/3

